

ITRIS

**Cedric Bode
Moritz Hoffmann**

ManageEngine 

**Unified Endpoint Management
mit
Desktop Central**

Problemstellung

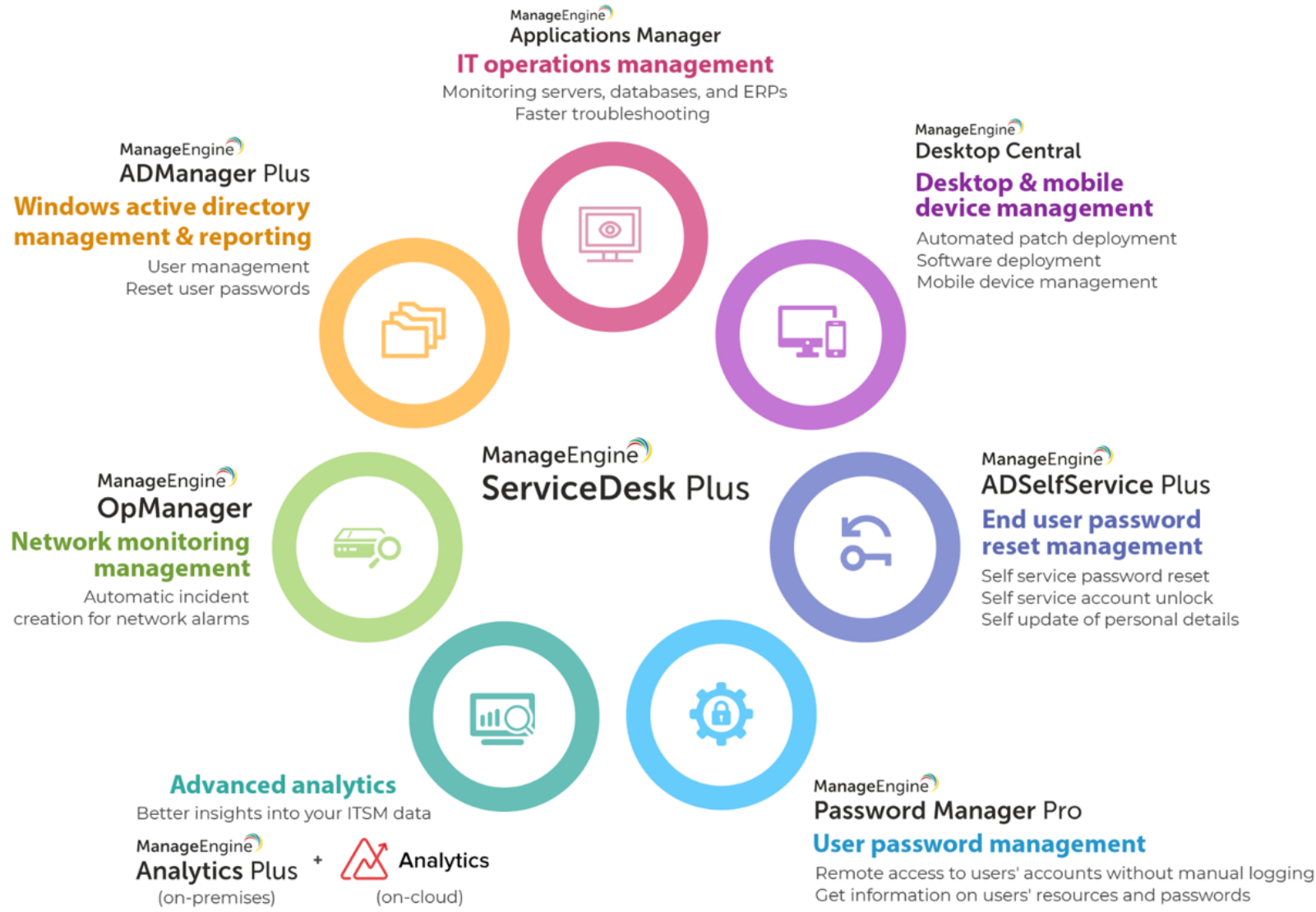
- Windows 7 - End of support 14. Januar 2020
- Windows 10 - waas? Windows as a service
- Kompatibilität der Hersteller
- WSUS
- **Fokus**
- Einblick in ein UEM



1.0 (1985)

Unified Endpoint Management - UEM





Asset

- Inventar Hardware Komponente
- Garantiestatus
- Technische Daten
- Eigene Felder

Software

- 4000 paketierte Standardsoftware
- Kioskmodus
- Eigene Software
- Zentrales Repository
- Prohibited Software
- Job Monitor

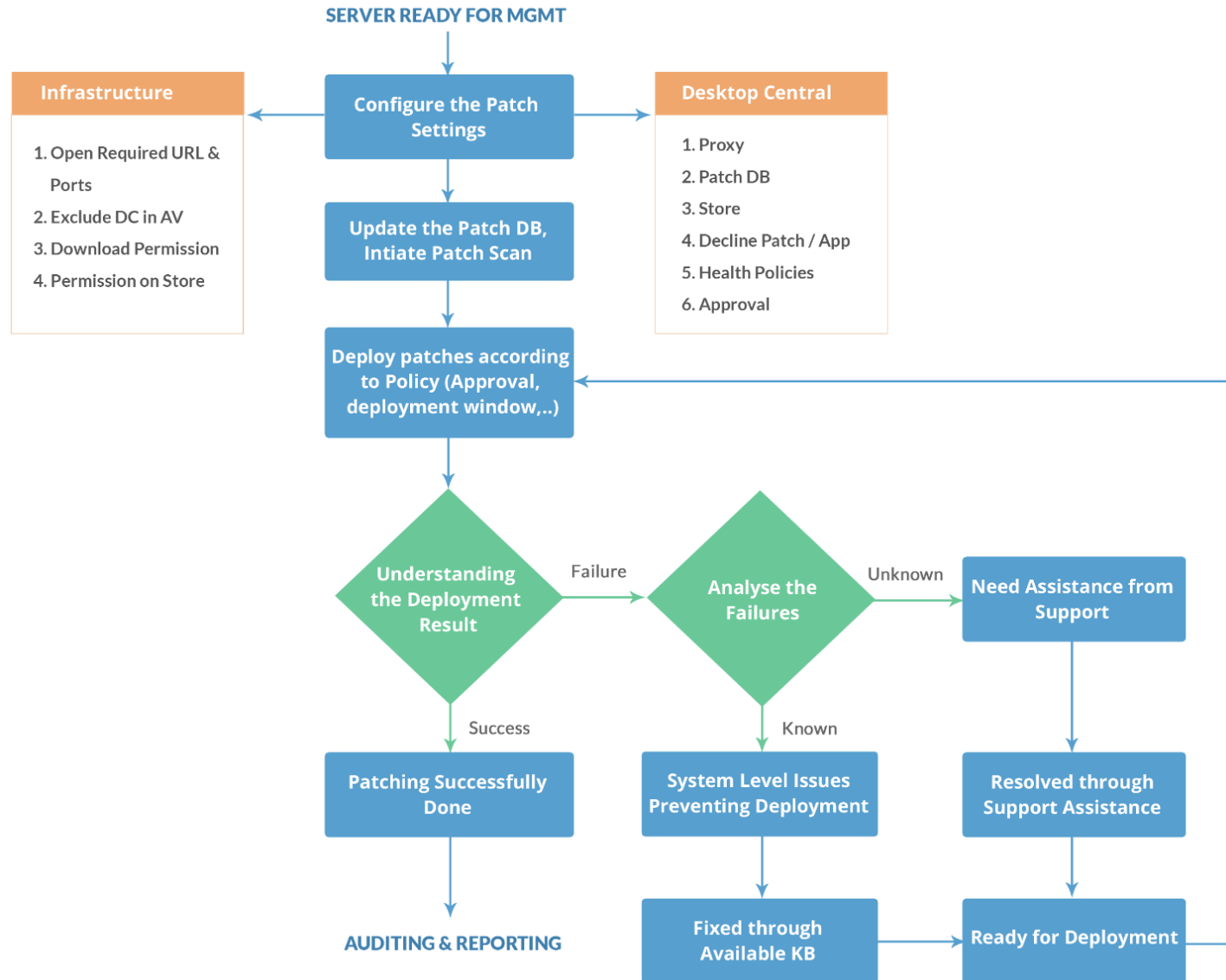
OS imaging deployment:

- Server OS
- Client OS

Patch management:

- Automatisierte Ablauf
- Patchmanagement Lebenszyklus
- Patchstatus/Version
- Fehlende und Fehlgeschlagenen Patches

Fehlgeschlagenen Patches



Mobile device management

- App Repository
- Remote control
- Automated updates
- Compliance
- Lokalisierung

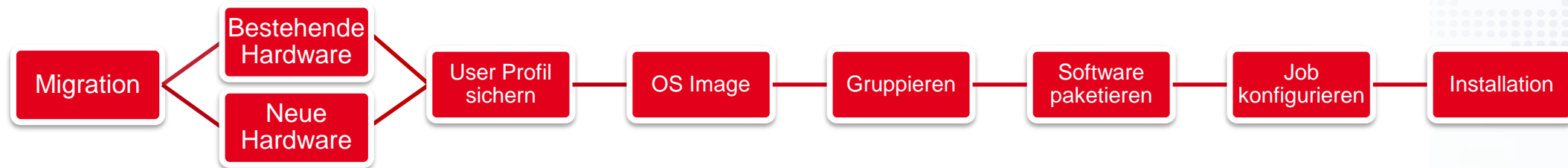
Configuration management

- Zertifikate
- USB
- Drucker
- Powermanagement
- WLAN
- Lizenzübersicht

Editionen von Desktop Central

Free Edition	Professional Edition	Enterprise Edition	UEM Edition
Suitable for SMBs		Features of Professional Edition +	Features of Enterprise Edition +
<p>Manage upto 25 computers & 25 mobile devices</p> <ul style="list-style-type: none"> » Patch Management » Software Deployment » Asset Management » Configurations » Windows System Tools » Remote Control 	<ul style="list-style-type: none"> » Patch Management » Software Deployment » Asset Management » Configurations » Windows System Tools » Remote Control » AD & User Logon Reports » Mobile Device Mgmt. (Add-on) » OS Deployment (Add-on) 	<ul style="list-style-type: none"> » WAN Bandwidth Optimization » Self Service Portal » Prohibited Software / Block EXE » Software Metering » License Management » Remote Session Recording » USB Device Management » Two Factor Authentication » Mobile Device Mgmt. (Add-on) » OS Deployment. (Add-on) 	<ul style="list-style-type: none"> » Mobile Device Management » Modern Management for Windows 10 devices » OS deployment

OS Deployment – Client Migration Windows 7 auf Windows 10



UEM – Unified Endpoint Management

- Automatisierung
- Effektivität und Effizienz
- Preis-Leistung
- Produktmodule
- Benutzerfreundlichkeit – Tutorials, Schulungen, Technical Admin Support
- Integration zum ITSM